

Error code SX001/SX010

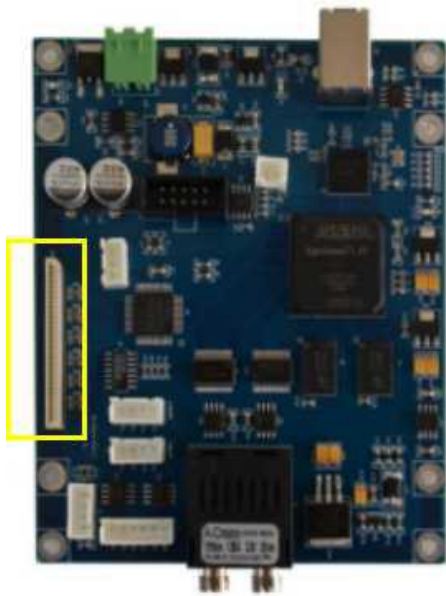
4. The carriage moves 5-8cm to right and moves 5-8cm to left. After stopping for one second, the carriage moves 5-8cm to right and screen shows SX001.

Reason: The left limit sensor and right limit sensor in X direction are not read. There is no communication between mainboard and sensor board.

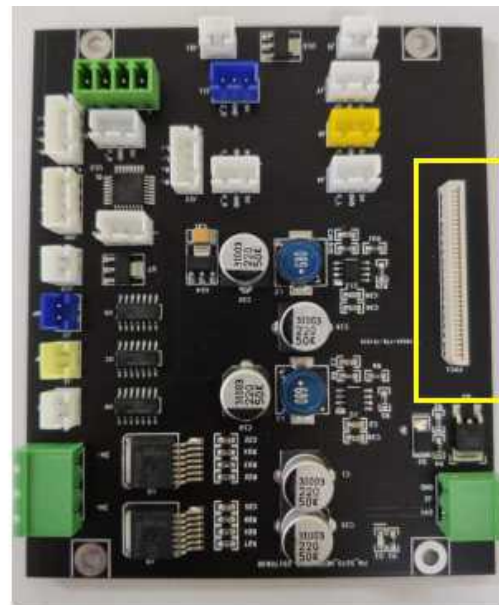
Check with following steps:

4-1 The flat cable(FPC) connection between mainboard and sensor is good.

4-2 Replace sensor board.



Mainboard



Sensor board



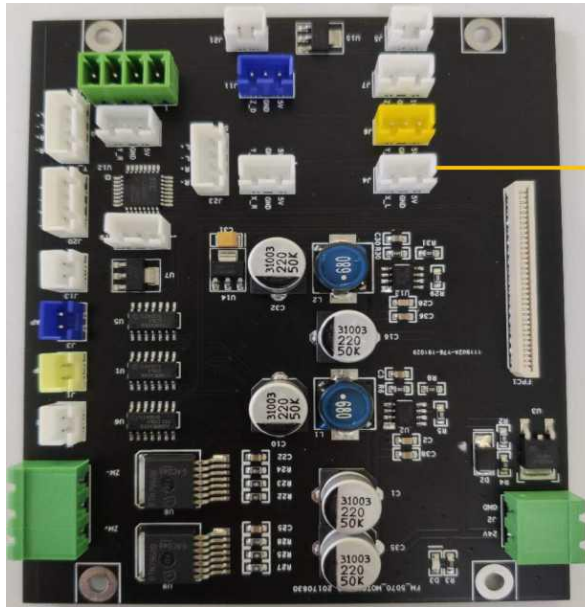
Flat cable (FPC)

5. The carriage moves 5-8cm to right. After stopping for one second, the carriage moves 5-8cm to right and screen shows SX001.

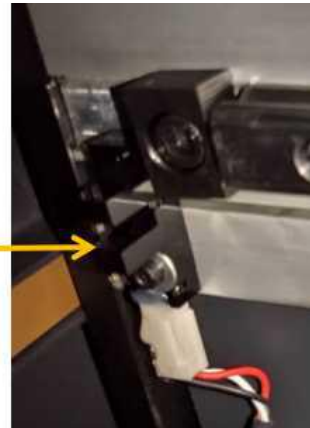
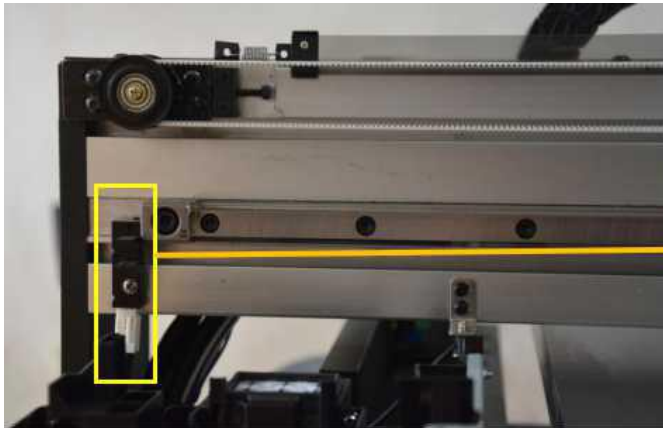
Reason: The left limit sensor in X direction is not read.

Check with following steps:

Check the left limit sensor in X direction damaged, position moved or sensor connector loose.



J4 Left limit for X axis SX001



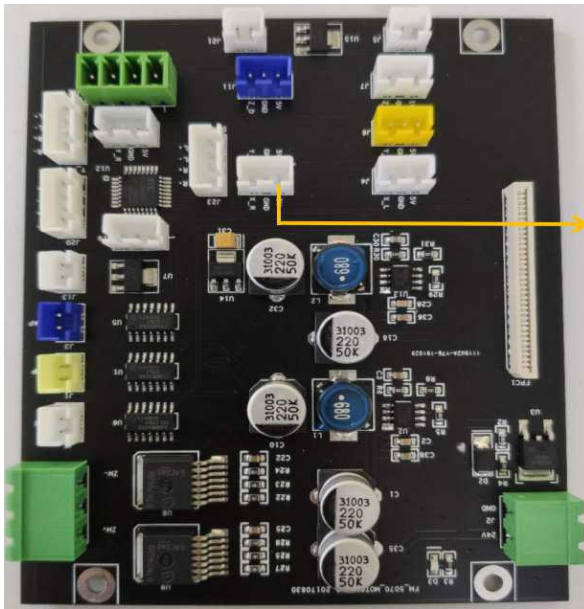
left limit sensor in X axis

6. The carriage moves 5-8cm to left. After stopping for one second, the carriage moves 5-8cm to right and screen shows SX010.

Reason: The right limit sensor in X direction is not read.

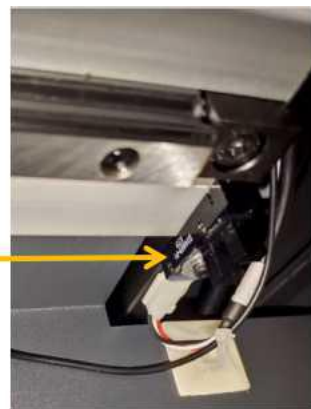
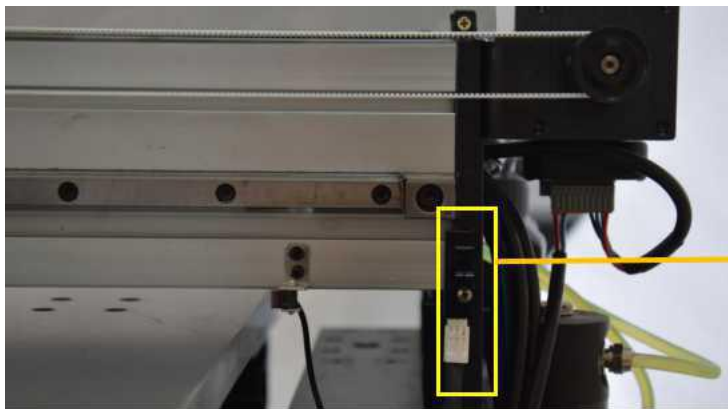
Check with following steps:

Check the right limit sensor in X direction damaged, position moved or sensor connector loose.



J9 Right limit for X axis

SX010



right limit sensor in X axis