

## Error code SY001/SY010

7. The flat table moves 2cm inward. After stopping one second, the carriage moves 5-8cm to right and screen shows SY001.

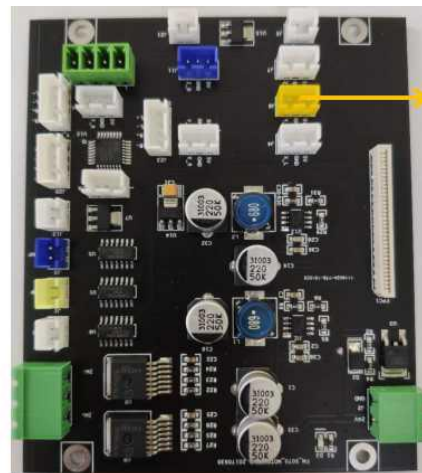
**Reason:** The front limit sensor in Y direction is not read.

### Check with following steps:

Check the front limit sensor in Y direction is damaged. And sensor connector on sensor board(SY001) is good or replug it.



Front limit sensor for Y axis



J6 Front limit for Y axis

SY001

8. The flat table moves 2cm outward. After stopping one second, the carriage moves 5-8cm to right and screen shows SY010.

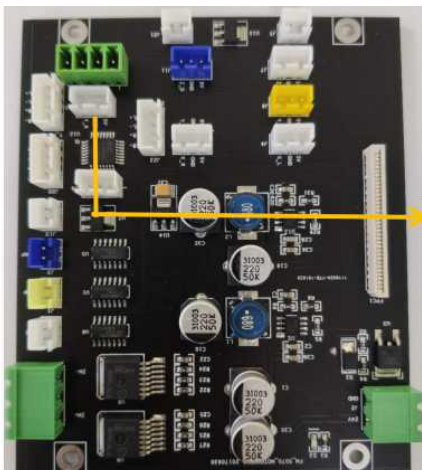
**Reason:** The back limit sensor in Y direction is not read.

### Check with following steps:

Check the back limit sensor in Y direction is damaged. And sensor connector on sensor board(SY010) is good or replug it.



Back limit sensor for Y axis



J10 Back limit for Y axis

SY010