

Error code SZ001

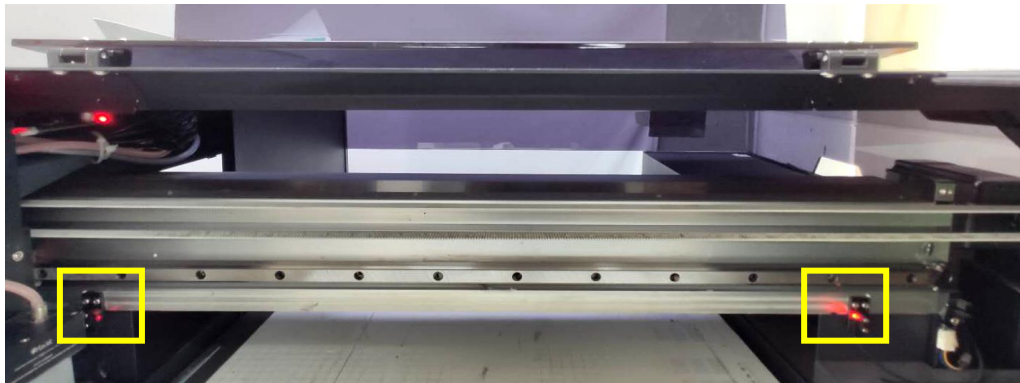
9. The flat table moves down 1cm. After stopping one second, the carriage moves 5-8cm to right and screen shows SZ001.

Reason: The height limit sensors are not read or the height limit sensors are not at same level.

Check with following steps:

9-1 Check the lights of height limit sensors are on or off.

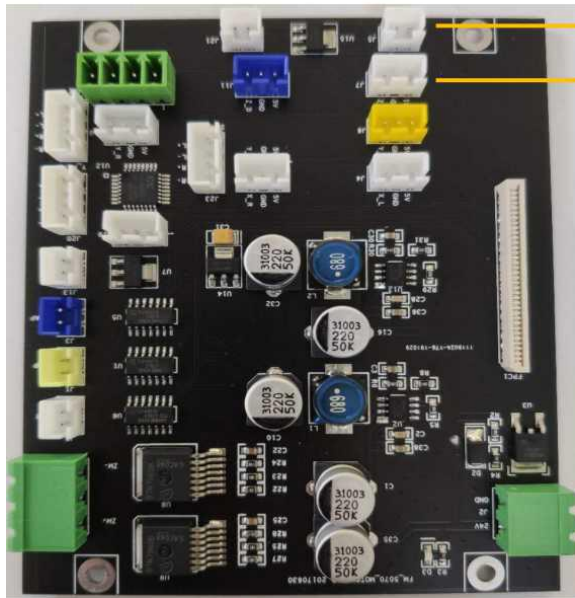
If lights are off, check the sensors connector on sensor board(SZ001) are good or loose. And replug it.



Transmitting end of height sensor



Receiving end of height sensor



J5 Transmitting terminal for height limit SZ001
 J7 Receiving end for height limit SZ001

9-2 If lights of height limit sensors are on. Check the height sensors are at same level. If not, adjust height limit sensors position to same level.



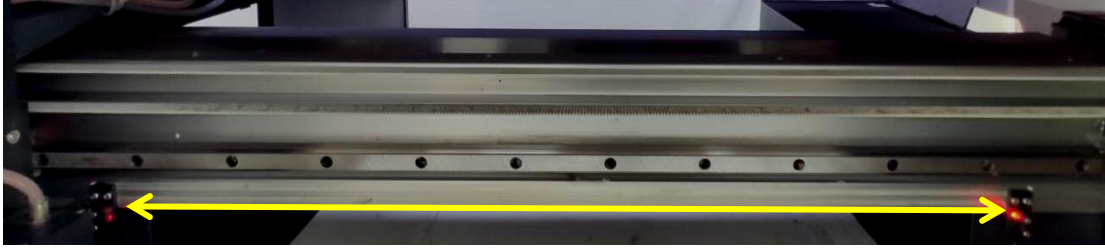
Transmitting end of height sensor



Receiving end of height sensor



Notice: If flat table moves to the highest position, there is only yellow light on with receiving end of height sensor.



10. The flat table moves up 1cm. After stopping one second, the carriage moves 5-8cm to right and screen shows SZ10.

Reason: The bottom limit sensor is not read.

Check with following steps:

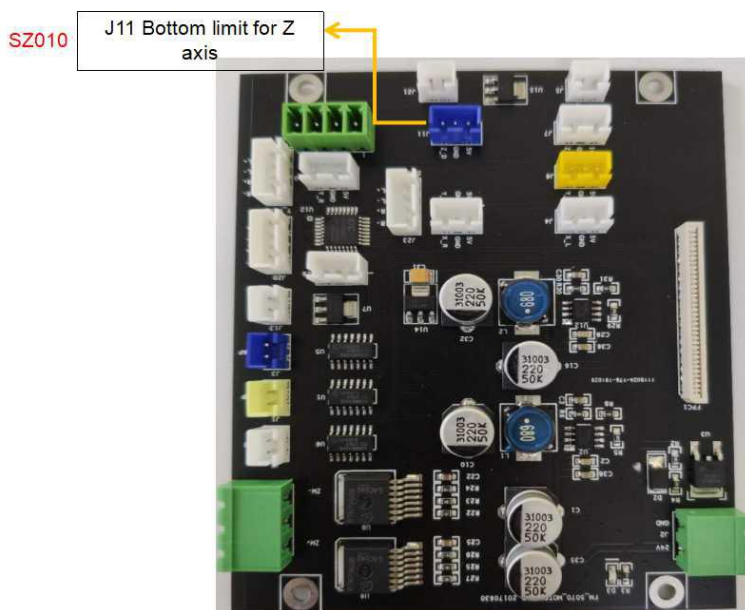
Check the bottom limit sensor is damaged or sensor connector on sensor board is loose. (SZ10) And replug it.



back side of printer



bottom limit sensor



SZ10

J11 Bottom limit for Z axis